

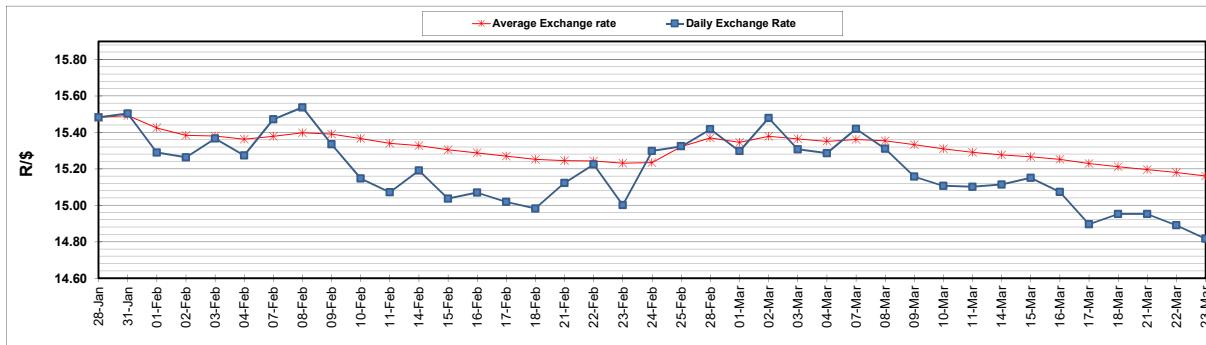
	PETROL 95 ULP	PETROL 93 ULP & LRP	DIESEL 0.05%	DIESEL 0.005%	ILL. PAR.
GAUTENG PUMP PRICE (SA c/l) AS FROM 02/03/2022	2,160.000	2,135.000	-	-	-
WHOLESALE PRICE (SA c/l) AS FROM 02/03/2022	-	-	1,948.880	1,955.280	1,318.688
SINGLE NATIONAL MAXIMUM RETAIL PRICE	-	-	-	-	1,690.000
BASIC FUEL PRICE - 23/03/2022 (SA c/l)	1,291.842	1,267.206	1,509.286	1,534.282	1,487.927
PRESS RELEASE CONTRIBUTION TO BFP 02/03/2022 - 23/03/2022 (SA c/l)	1,100.270	1,085.270	1,107.630	1,114.030	1,097.128
UNIT OVER/(UNDER) RECOVERY - 23/03/2022 (SA c/l)	(191.572)	(181.936)	(401.656)	(420.252)	(390.799)
AVERAGE BASIC FUEL PRICE 25/02/2022 - 23/03/2022	1,272.669	1,249.772	1,376.680	1,396.886	1,331.847
AVERAGE UNIT OVER/(UNDER) RECOVERY 25/02/2022 - 23/03/2022	(193.027)	(185.129)	(289.418)	(303.856)	(253.825)

### ANALYSIS MOVEMENT OF AVERAGE OVER/(UNDER) RECOVERY

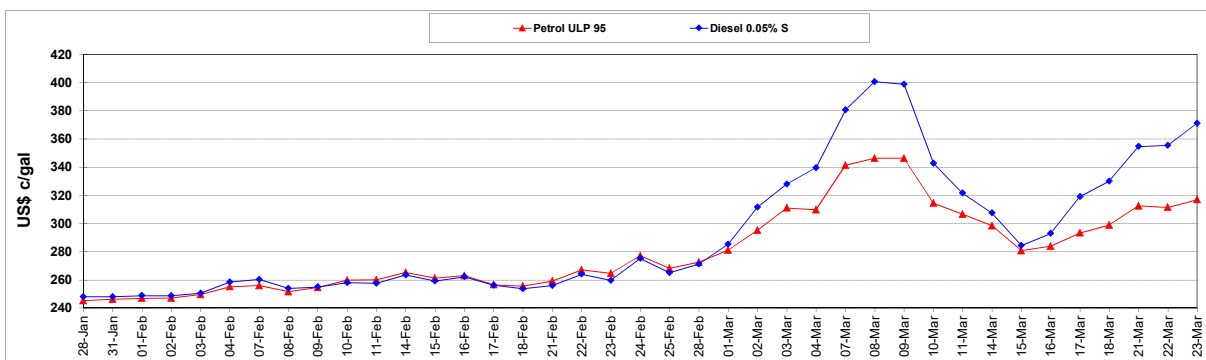
	PETROL 95	PETROL 93	DIESEL 0.05%	DIESEL 0.005%	ILL. PAR.
- MOVEMENT IN INTERNATIONAL PRODUCT PRICES	(199.204)	(191.196)	(296.101)	(310.637)	(260.290)
- MOVEMENT IN EXCHANGE RATE	6.178	6.067	6.683	6.781	6.466
AVERAGE UNIT OVER/(UNDER) RECOVERY 25/02/2022 - 23/03/2022	(193.027)	(185.129)	(289.418)	(303.856)	(253.825)

### R/\$ EXCHANGE RATE - (R/\$14.8175 - 23/03/2022)

#### EXCHANGE RATE USED IN BASIC FUEL PRICE



#### INTERNATIONAL PRODUCT PRICES OF BASKET USED IN BASIC FUEL PRICE



#### BASIC FUEL PRICE IN SA CENTS PER LITRE

